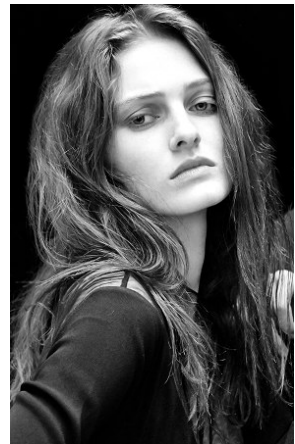
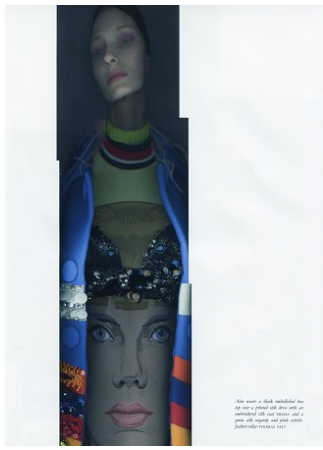


# elite

P A R I S



theatrical  
T O P S  
photographed  
by katerina jebb and styled  
by naomi itkes



## AINE O'GORMAN

Height 176 cm Bust 82 cm B Waist 62 cm Hips 89 cm Shoe 39 EU / 6 UK Hair Red Eyes Blue

19 avenue George V 75008 Paris - France T: +33 1 4044 3222 F: +33 1 4044 3280 E: [info@elitemodel.fr](mailto:info@elitemodel.fr)